



# INFLUENZA WATCH LOS ANGELES COUNTY

**Los Angeles County (LAC)** The total number of positive flu tests decreased slightly in week 47 while the percent of flu tests that tested positive remained about the same (Figure 1). The percent of RSV tests that tested positive increased significantly in week 47. One severe pediatric influenza case occurred in week 47. Twelve new ILI (influenza-like illness) outbreaks (all in elementary schools) were reported during week 47 (Figure 1). The percent of emergency department visits due to ILI continued to decrease but remains higher relative to the same time in previous years (Figure 2 and Figure 3). While pandemic H1N1 activity appears to be decreasing in Los Angeles County (see page 2), we expect to see a rise in other respiratory viruses that normally appear during this time of year including RSV.

**Table 1: Surveillance System Overview**

SURVEILLANCE SYSTEM*	Week 47	2009-2010 YTD
Percent Positive Influenza Tests <sup>±</sup>	11.7	18.6
Percent Positive RSV Tests <sup>†</sup>	5.2	0.7
Percent Flu A / Flu B <sup>‡</sup>	100 / 0	99.7 / 0.3
Severe Pediatric Influenza Cases <sup>†</sup>	1 (0)	78 (8)
Respiratory Outbreaks	12	332
Influenza Deaths	0	46

\*See <http://lapublichealth.org/acd/flu.htm> for a description of surveillance methods.

± Sentinel sites (8 participating facilities in week 47)

‡ Sentinel sites (3 participating facilities in week 47)

†The number of deaths is indicated by the parenthesis.

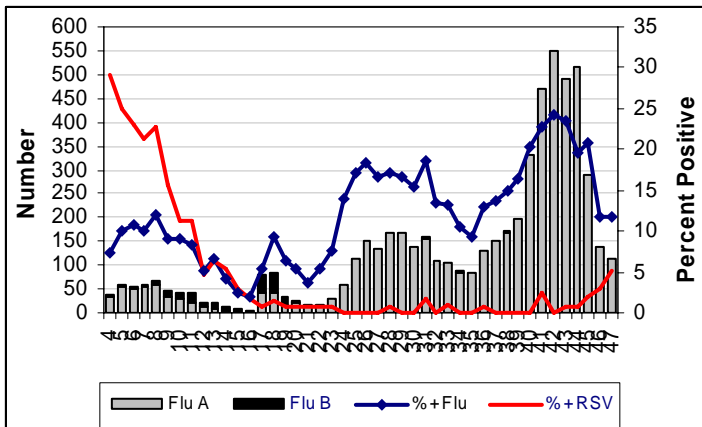
**California** During week 47 (November 22-November 28), influenza activity in California remained **widespread**.

<http://www.cdph.ca.gov/PROGRAMS/VRDL/Pages/CaliforniaInfluenzaSurveillanceProject.aspx>

**United States** Influenza activity decreased in the US during week 46 (Nov 15-Nov 21). In week 46, 32 states reported widespread activity, 17 states reported regional activity, and 1 state reported local activity. Over 99% of subtyped influenza A viruses reported to CDC in week 46 were novel influenza A (H1N1) viruses. <http://www.cdc.gov/flu/weekly>

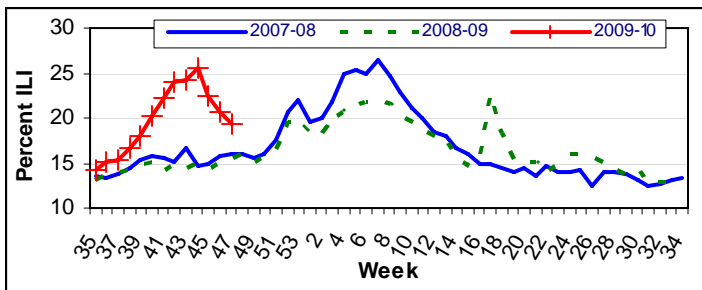
**In the News** An article from a Canadian news source, *The Chronicle Herald*, discusses findings from Public Health of Canada that show, unlike seasonal flu which has fatal consequences for mainly the elderly, pandemic H1N1 is causing deaths among younger age groups. As of Nov. 21, the median age of people hospitalized in Canada with H1N1 was 26 years whereas the median age of a person hospitalized for all causes during the 2007-2008 flu season (a proxy for seasonal flu) was 71. The median age of people admitted to the ICU with H1N1 was 45 whereas the median age of a person admitted to the ICU during the 2007-2008 flu season was 68. Finally, the median age of fatal H1N1 cases was 54 whereas the median age of deaths during the 2007-2008 flu season was 82. Children under 5 had the highest rate of ICU admission due to H1N1 followed by adults aged 45-64 (this is consistent with data from LAC, see Figure 4 on page 2). <http://thechronicleherald.ca/Canada/1155771.html>

**Figure 1: Total Positive Flu and % Positive Flu by Week**

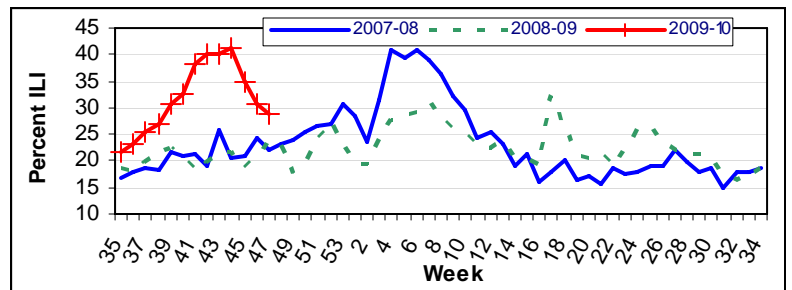


\*Influenza data represent testing completed in 9 facilities except in weeks 39 and 44-47 in which data represent testing in 8 facilities.

**Figure 2: Percent of ED Visits for ILI by Week, All Ages**



**Figure 3: Percent of ED Visits for ILI by Week, 5-14 Years**

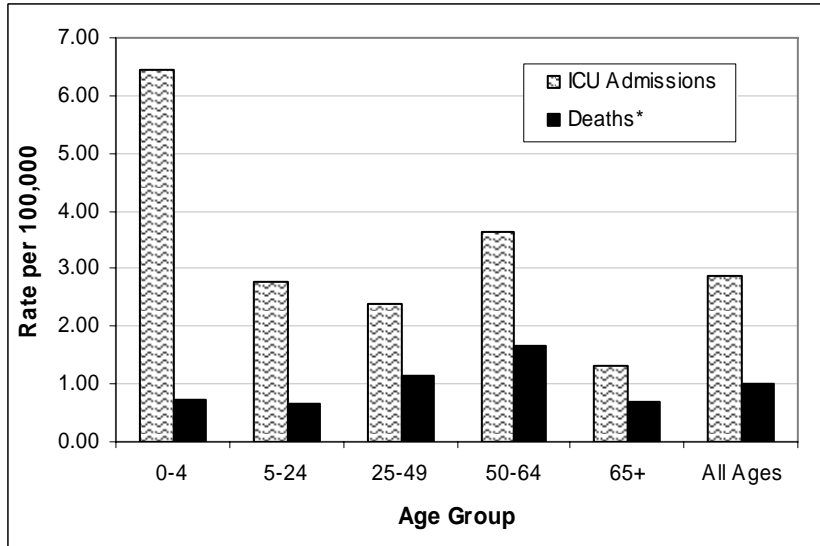




# INFLUENZA WATCH LOS ANGELES COUNTY

## Analysis of Influenza Cases in Los Angeles County (LAC)

**Figure 4: Rate per 100,000 of H1N1 ICU/Deaths by Age as of 12/3**



\*Rates may be unstable due to small number of cases.

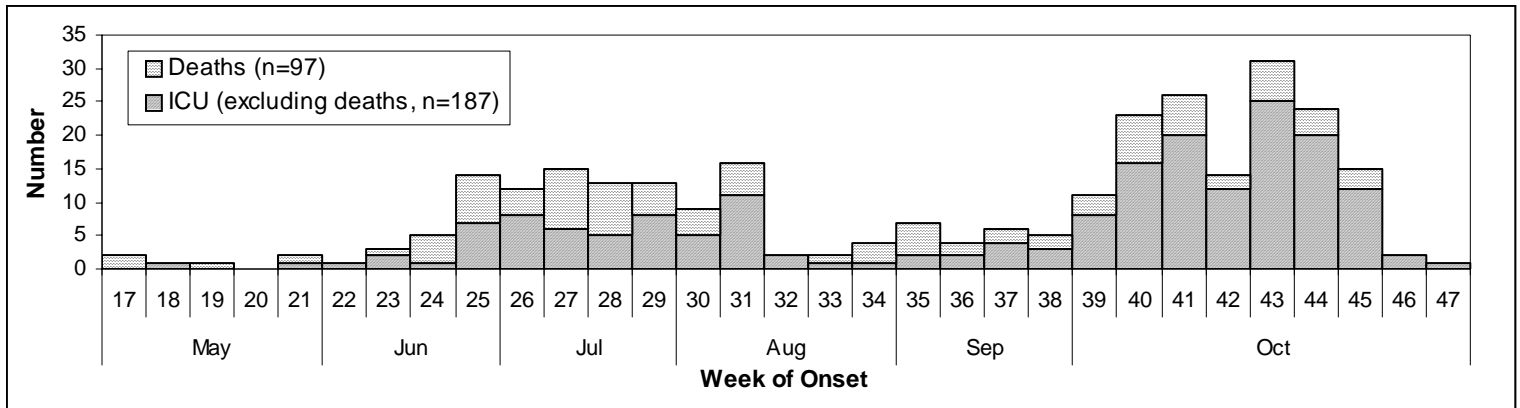
The rate of ICU admission due to pandemic H1N1 is lowest among persons aged 65 years and older and highest in persons aged 0-4 years. However, people aged 0-4 years have a relatively low rate of death due to H1N1 along with those aged 5-24 years and 65 years and over. The highest rate of death is seen among individuals aged 50-64 years followed by those aged 25-49 years (Figure 4).

While the number of ICU/deaths seems to have peaked during week 43 (Figure 5), Los Angeles County Department of Public Health continues to receive many reports of ICU admissions and deaths due to H1N1.

The number of hospitalizations due to any influenza as well as the rate (per 1,000 hospital beds) of laboratory-confirmed influenza continued to decrease in week 47 (Figure 6).

Since the beginning of the pandemic in April, 2009 there have been 284 ICU/deaths due to confirmed pandemic influenza A type H1N1. Of these cases 97 have been deaths.

**Figure 5: Number of Pandemic H1N1 Cases by Week of Onset as of December 3, 2009, Individual Case Reporting**



**Figure 6: Number and Rate of Hospitalized Influenza (Any Influenza) Cases, Aggregate Reporting**

